



Why Buy Durcon Epoxy



DURCON[®]
A WILSONART COMPANY

Durcon Facts

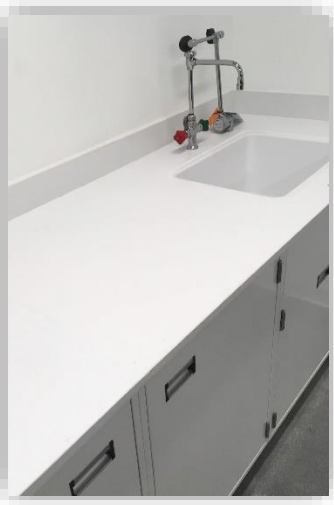
- **1985** - Expanded facility opened
- **130,000+ sq ft** - Manufacturing space
- Largest custom fabricator of epoxy resin worksurfaces in USA
- **7,000+ pieces** - Fabricated per week
- **7M+ sq ft** - Epoxy slabs produced per year
- **400** - Employees
- **50** - Countries





DURCON
A WILSONART COMPANY

Overview of Epoxy Offerings



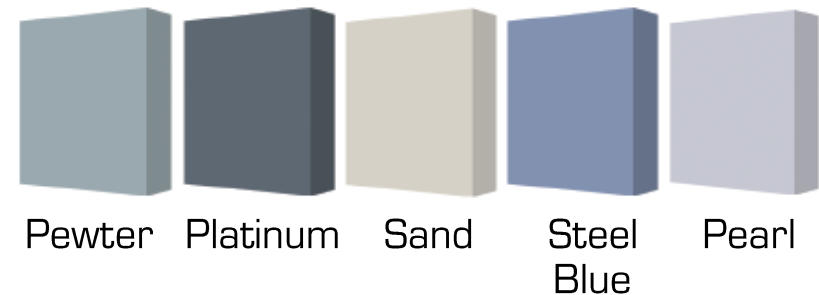
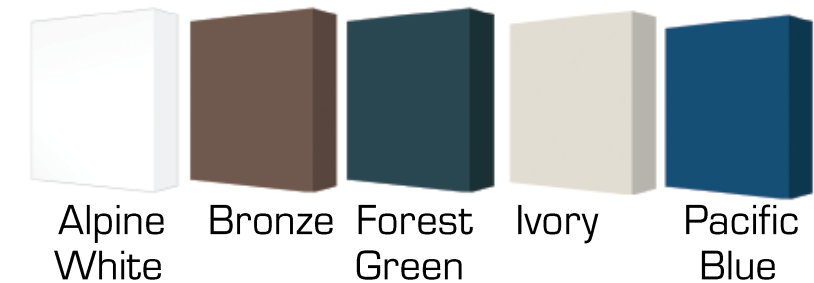
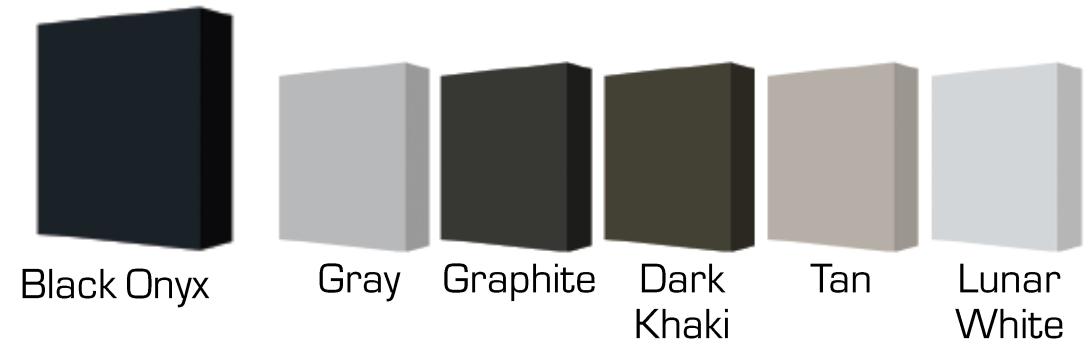
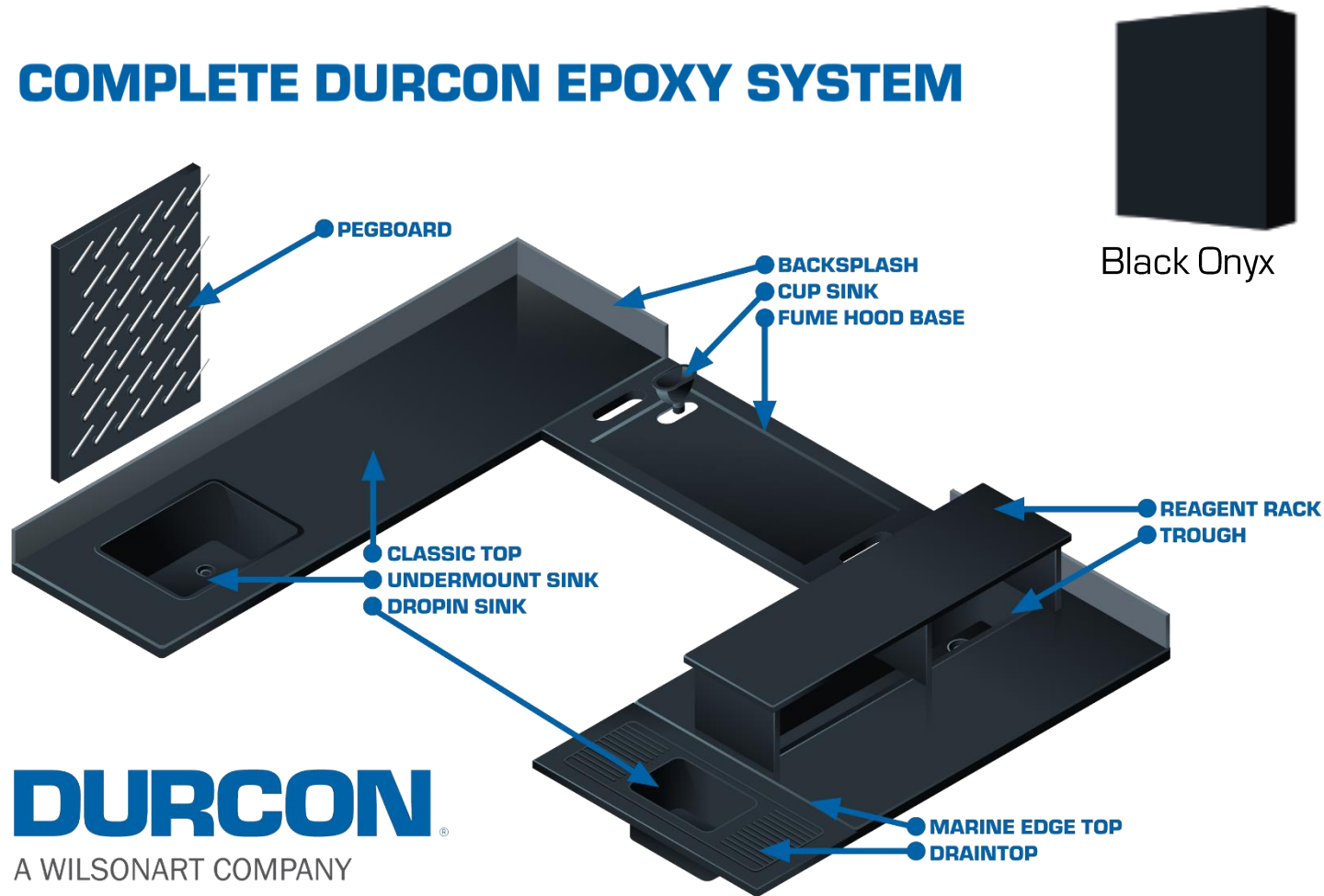
DURCON Epoxy Worksurfaces

A WILSONART COMPANY



Epoxy System & Color Choices

COMPLETE DURCON EPOXY SYSTEM



Epoxy Performance Characteristics

Chemical Resistance

Fire & Heat Resistance

Non-porous

Monolithic

Durable Physical Properties

Environmental Options

DURCON®

A WILSONART COMPANY

Epoxy Advantages Overview

THE MANY ADVANTAGES OF DURCON EPOXY

In the materials selection phase of the lab planning process, it is important to understand what makes a material capable of performance and longevity in a laboratory environment.

Learn more details on the many advantages to choosing Durcon Epoxy as a lab worksurface at:
<https://www.durcon.com/epoxy-advantages>



**CHEMICAL
RESISTANCE**



DURABILITY



**HEAT & FLAME
RESISTANCE**



**LIGHT REFLECTANCE
VALUE (LRV)**



**COMPANY
HISTORY**



MADE IN THE USA



**ENVIRONMENT
CONSCIOUS**



**INDOOR AIR
QUALITY**



SAFE & CLEAN



APPEARANCE



FOOD SAFETY



VISUALIZER PRO

A wide-angle photograph of a laboratory interior. The room features long, grey epoxy countertops supported by wooden cabinets. On the left, a wall-mounted rack holds various colored stopcocks (yellow, orange, blue, black, green). In the background, there are fume hoods with glass fronts and control panels. To the right, a metal rack holds numerous white test tubes. The floor is a polished, light-colored material. The overall lighting is bright and even.

DURCON[®]

A WILSONART COMPANY

Slab Size
96" x 72"

Thickness
1.25"
1.00"
0.75"

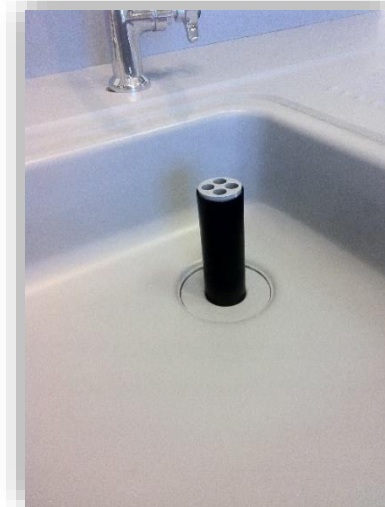
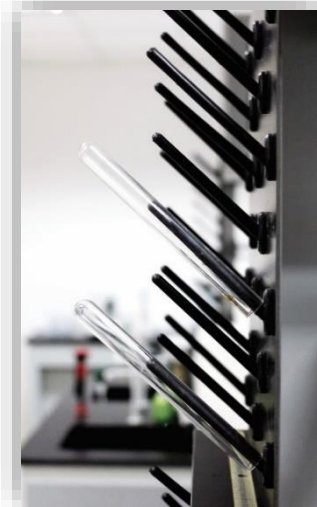
Color Options
Standard Colors – 6
Custom Colors – 100s

Epoxy Product Availability



DURCON
A WILSONART COMPANY


Epoxy Sinks & Accessories



Epoxy Sink Options



Dropln® Sinks

- Introduced by Durcon 1992
- Eliminates need for support systems underneath
- Reduces buildup bacteria, easy to clean
- Available in single, double, or shallow basin for ADA  compliance



Undermount Sinks

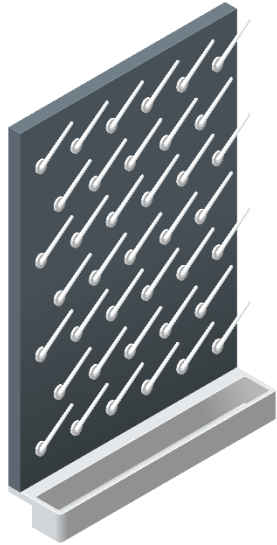
- Durable epoxy construction
- Require under-sink support system
- Available in single or double



Specialty Shapes Sinks

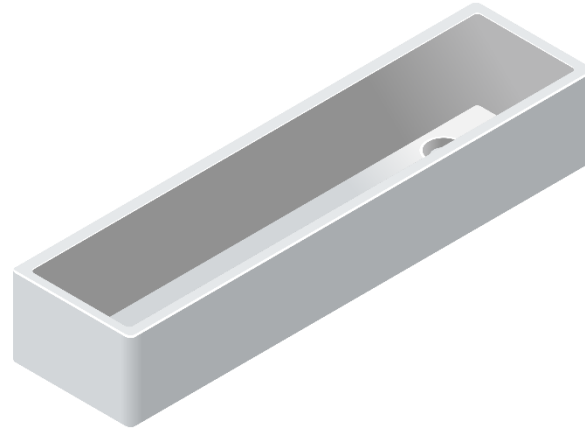
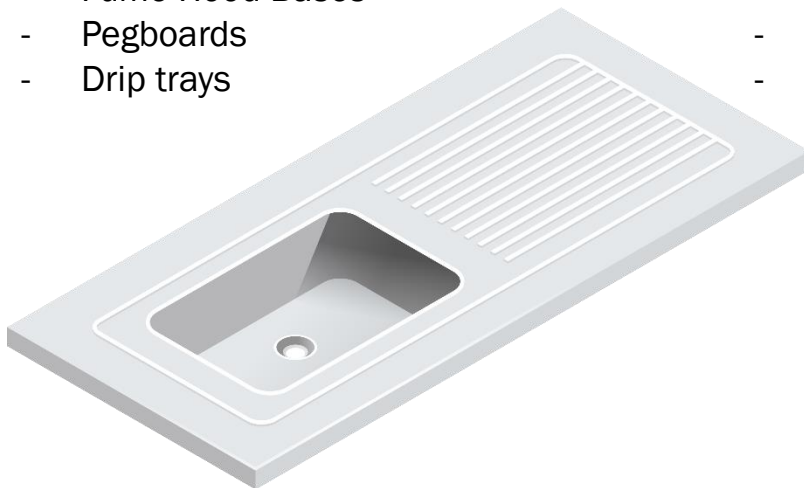
- Trifacia
- Round & Elliptical
- End & Wall Mount utility sinks

Epoxy Sink Accessories & more



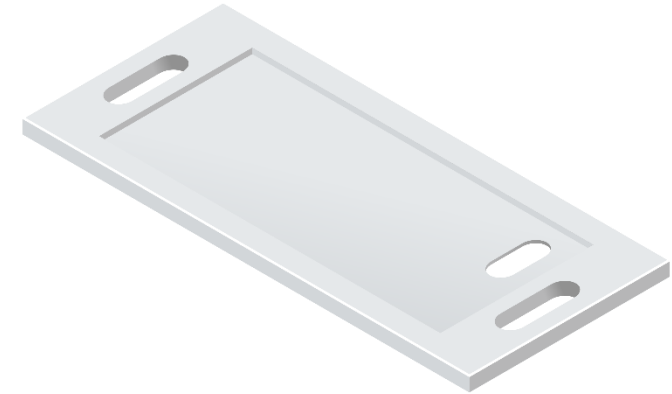
Lab Essentials

- Fume Hood Bases
- Pegboards
- Drip trays



Troughs

- DropIn troughs
- One-piece undermount
- Sectional undermount



Sinks & Accessories

- Cupsinks
- Outlets
- Sink stoppers
- Strainer caps



Greenstone Epoxy – Sustainability

The Environmentally Friendly Option

Durcon Greenstone epoxy resin worksurfaces feature the same professional appearance and durable performance as Durcon epoxy resin, while meeting SCS certification for Post-consumer Recycled Content. This sustainable, environmentally friendly green alternative is made to last.



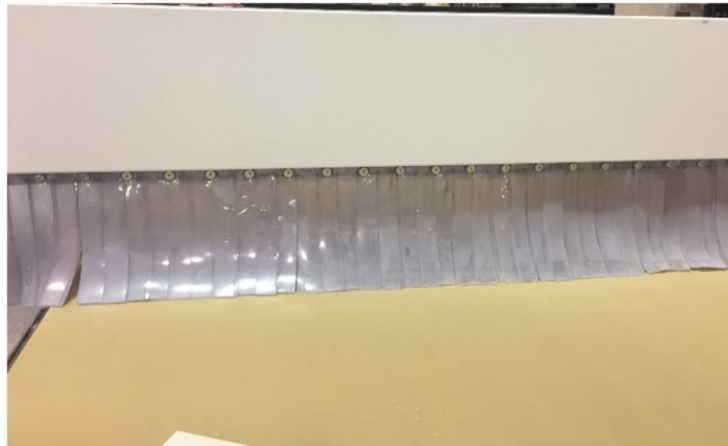
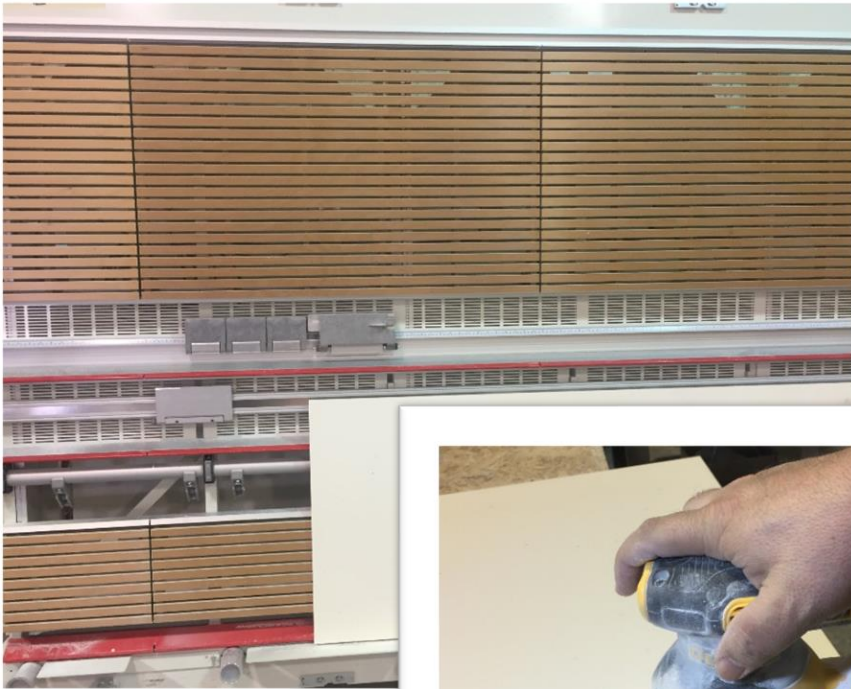
Fabrication Capabilities

DURCON
A WILSONART COMPANY

DURCON FAB

A WILSONART COMPANY

Routing
Cutting
Special edge finishes
Custom designs



Worksurface Materials Comparison

Material	Chemical Resistance	Class A Fire Rating	Heat Resistance	Moisture Resistance	Impact & Scratch	UV Light Resistance	Edge Color Consistency
Epoxy Resin	✓	✓	✓	✓	✓	✓	✓
Solicor-CR Lab-Grade	✓	✓	✓	✓	✓	✓	✓
Solid Phenolic Compact (SPC-CR) Lab Grade	✓	—	✓	✓	✓	✓	✗



KEY: ✓ Best
✓ Good
— Fair
✗ Poor

Durcon Quality Assurance

- Quality Checkpoints
 - 3x dimensional
 - 4x visual
 - Fabrication database
- Continuous Improvements
 - Best Practice training
 - Monthly Operational Excellence Review
 - Daily customer feedback communication
- ISO 9001:2015 Certified



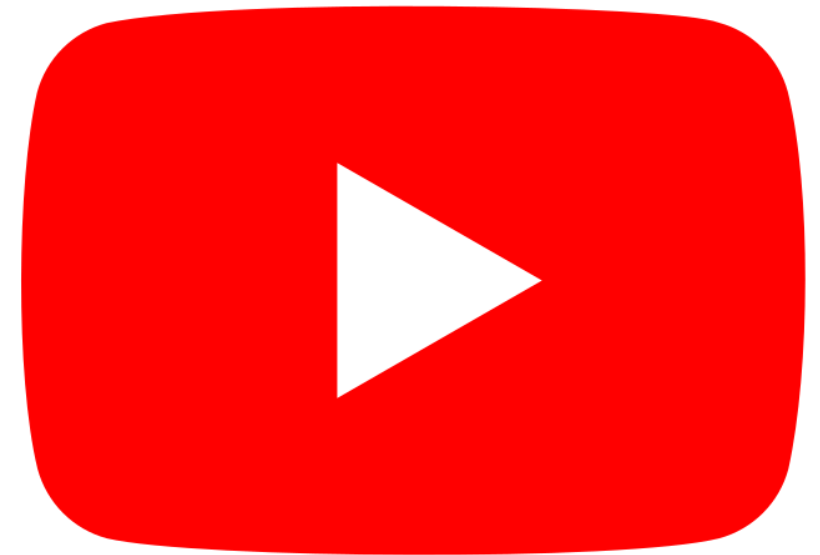
Follow Durcon on Social Media



linkedin.com/company/durcon-incorporated



facebook.com/durcon/



Training Videos

Certifications & Memberships

DURCON
A WILSONART COMPANY



ISFA Member – International Surface Fabricators Association

ISO 9001:2015 – International Organization for Standardization certified

Greenguard Gold – Low chemical emissions

SCS Certified – Minimum 10% post-consumer recycled glass content

NSF International – Tops safe to use in food prep areas certification

SEFA Member – Scientific Equipment & Furniture Association, Executive Member

USGBC Member – U.S. Green Building Council

AIA Member – American Institute of Architects

Durcon products are proudly **manufactured & fabricated in the USA**