

**DURCON  
EPOXY  
PRODUCT  
CATALOG**



**DURCON**<sup>®</sup>  
A WILSONART COMPANY

**WILSONART**

## SUPERIOR QUALITY

Durcon A Wilsonart Company® epoxy resin is widely considered the industry standard for quality lab-grade worksurfaces. To achieve this reputation of consistent quality, we utilize finely tuned production systems combined with longstanding manufacturing and engineering expertise. These practices are what enable us to set the bar for quality expectations.

## EXCEPTIONAL CUSTOMER SERVICE

Durcon takes pride in the level of service we provide to each of our clients. From estimating all the way to shipping, Durcon's dedicated team is responsive and attentive, leading to fast, accurate turnarounds. Every order is continuously tracked via our proprietary **eProject Manager** software, allowing customers to monitor the status of their order at any time, from anywhere.

## A GLOBAL PRESENCE

Durcon International supplies the world marketplace with prompt, accurate shipments manufactured precisely to customer specifications around the globe. No matter your location, Durcon has you covered.



## INDUSTRY USES

Durcon worksurfaces are ideal for K-12 & university labs, as well as research & development environments in the medical, government, pharmaceutical industries, and more.



## PERFORMANCE

Durcon provides high-performance systems and support with every epoxy resin product.

- Decades of experience
- Innovative solutions
- Fabrication capacity
- Technical support staff
- Global distribution network

## SAFETY & DESIGN

Durcon worksurface systems combine safety, functionality and design to enhance aesthetics while keeping users safe.

- Edge finish options
- Durability
- Material certifications
- Color options
- Eco-conscious alternatives

## INTEGRATION

Durcon provides a complete system of epoxy resin worksurfaces, sinks and accessories, ensuring integrated consistency throughout the lab setting.

- Workstations
- Sinks & components
- Fume hood bases
- Troughs
- Pegboards

## MADE FOR LABORATORIES

Durcon worksurface systems are monolithic epoxy resin, molded using a unique process which includes a special curing stage to ensure a complete chemical reaction throughout the material. The result is a lab-grade, uniform worksurface of the highest quality.

## PRODUCT CONFIGURATIONS

With numerous safety, function and style options, virtually any facility configuration can be achieved using available Durcon components.

- Marine edge containment tops
- DrainTops
- Balance tables, Isotops & Isopads
- Dropln & undermount sinks
- Wall mount, utility & specialty sinks
- ADA compliant sinks

## ENVIRONMENTALLY CONSCIOUS

Durcon Greenstone epoxy worksurfaces are an eco-friendly alternative to standard Durcon epoxy that feature the same durability, performance and appearance, while meeting SCS requirements for post-consumer recycled content.



## COMPLETE LAB SYSTEM



## SUPERIOR PERFORMANCE

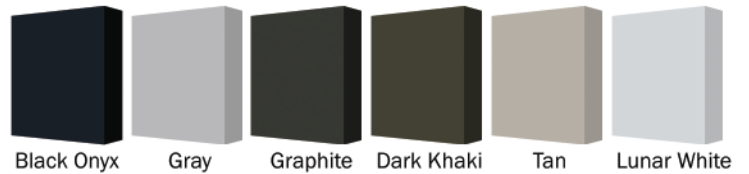
Durcon epoxy resin is formulated to balance the highest levels of performance, safety and resistance. All Durcon epoxy products are Greenguard Gold certified for safe indoor air quality, and NSF/ANSI 51 certified for use in food areas. Durcon epoxy products are also tested to SEFA chemical resistance standards as well as moisture, heat and flammability resistances and other physical properties.

## COLOR OPTIONS

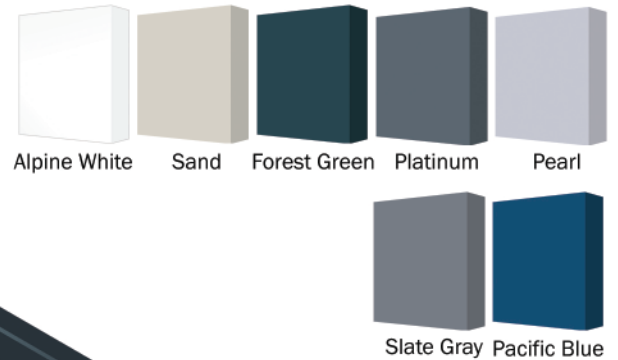
Black Onyx epoxy is the most popular worksurface color in the lab industry as the low-gloss matte finish is easier on user eyes and increases acuity for visual comparisons in the lab.

In addition to our Black Onyx, Durcon offers our epoxy material in several color palettes - including bespoke colors based on customer requirements.

## DURCON CORE COLORS

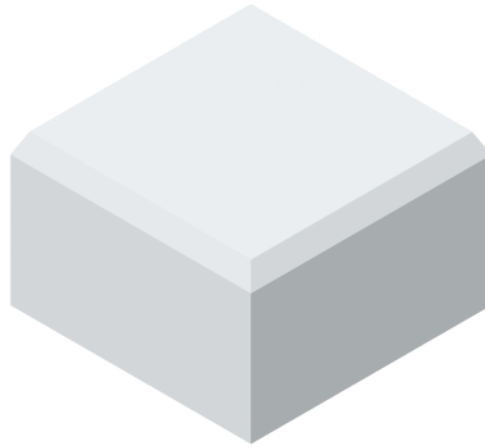


## ADDITIONAL COLOR OFFERINGS



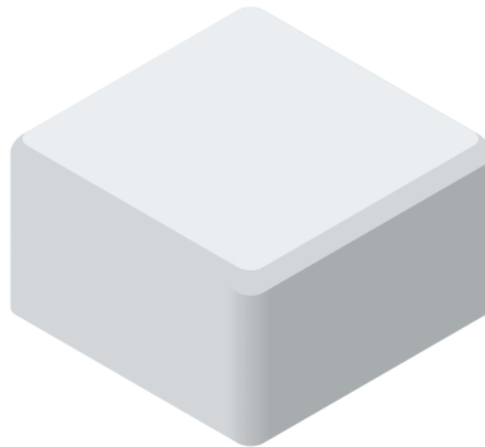
## BEVEL EDGE FINISH

One inch thick Black Onyx ClassicTop worksurfaces with machine beveled edges are the laboratory industry global standard. Bevel edges are available in seamless lengths up to 96" on our ClassicTop worksurfaces and provide the greatest flexibility for many applications.



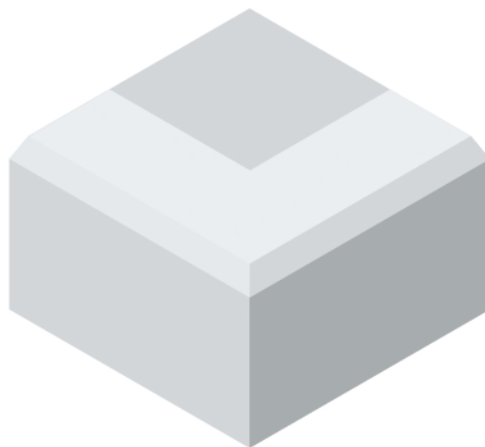
## RADIUS EDGE FINISH

Also popular on ClassicTop worksurfaces is the 1/4" radius edge finish option. This finish is fabricated to the same exacting standards as our bevel edge finish but features eased corners that provide additional safety and comfort for laboratory users.

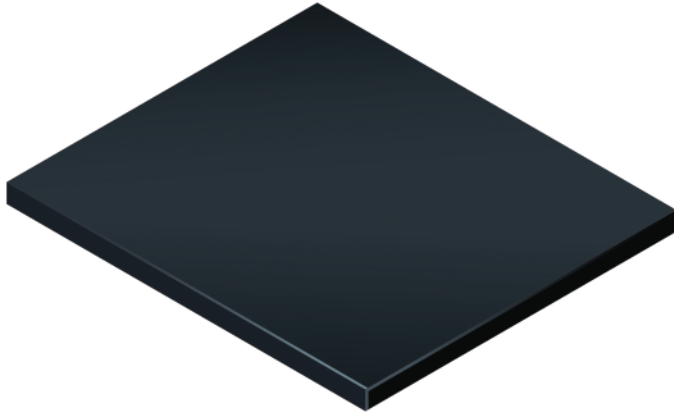


## MARINE EDGE FINISH

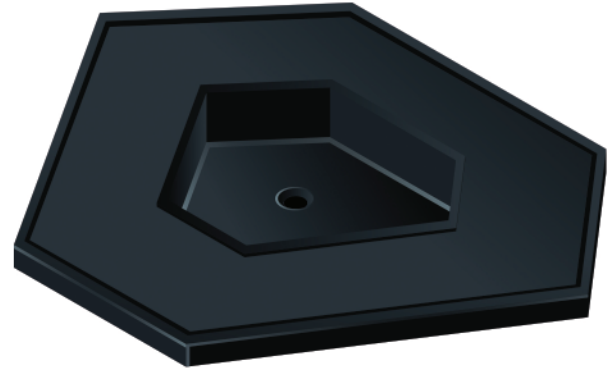
Marine edge finish worksurfaces are recommended for areas where liquid containment is a priority. These 1/4" dished worksurfaces help protect casework flooring and lab users by containing spills on the worksurface.



## CLASSICTOP WORKSURFACES



## TRIFACIA WORKSTATIONS



### CLASSICTOP WORKSURFACES

ClassicTop worksurfaces are recommended for classrooms, laboratories and production facilities where seating or reconfiguration is required.

Available with machine beveled or radiused edges, ClassicTop worksurfaces are available in any size up to 96"x 72". ClassicTop worksurfaces can be used for custom size and shape requirements, or when classic styling is an aesthetic preference.

### TRIFACIA WORKSTATIONS

Trifacia tops are marine edge workstations that provide convenient access for up to three table worksurfaces. Trifacia epoxy resin sinks are also available.



**NOTES: THIS AREA PROVIDED FOR ORDER DETAILS, QUESTIONS, IDEAS & MORE**

.....

.....

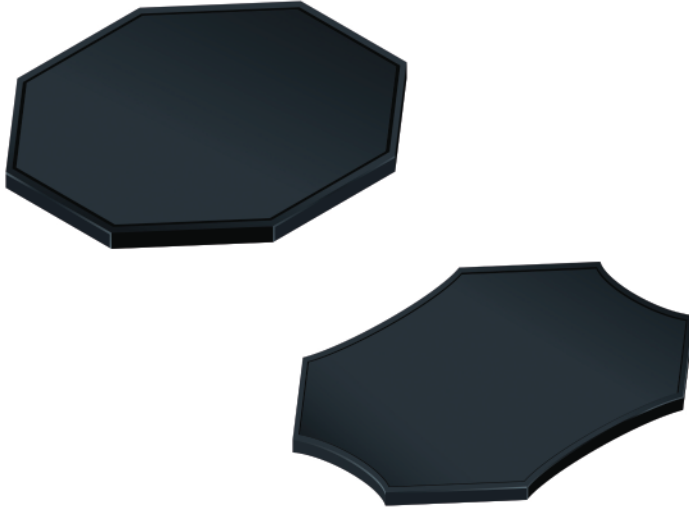
.....

.....

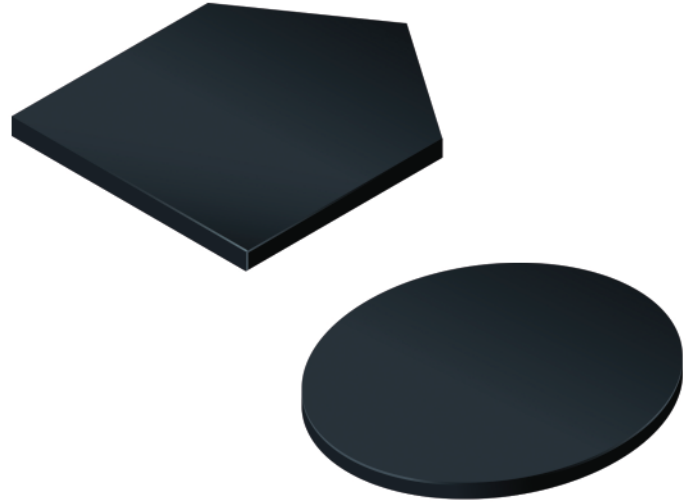
.....

.....

OCTAGONAL WORKSTATIONS



SPECIALTY & MOLDED SHAPES



OCTAGONAL WORKSTATIONS

Octagonal workstations are designed to accommodate multiple users. Tailored for educational and training purposes, this innovative design enables larger groups of students or technicians to gather around and view a single device or demonstration at the workstation.

Offered with a bevel, radius or marine edge finish, the octagonal workstation is available as a single piece, or with an epoxy resin trough or sink.



SPECIALTY & MOLDED SHAPES

Specialty worksurface shapes are available for all types of teaching and laboratory environments. Quadrilaterals, hexagons and other shapes are molded in one seamless piece and ship from Durcon ready for installation, with or without sinks or troughs.

Many additional custom shapes - even asymmetrical pieces and belly cuts - can be fabricated to specification. With custom shapes, we recommend submitting drawings for quotation.

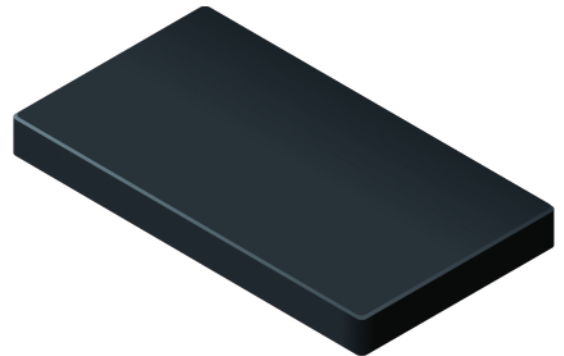


NOTES .....

**FUME HOOD BASES**

**BALANCE TABLES**

**ISOTOPS**



**FUME HOOD BASES**

Durcon epoxy resin Fume Hood Bases provide a highly durable, chemical and heat resistant worksurface for the harshest of laboratory environments.

Available for most brands of fume hood cabinets, Durcon Fume Hood Bases are seamlessly molded up to 98" long and are surrounded by a 3/8" integrally-molded containment rim designed to ease cleanups and prevent chemical spills from damaging casework.



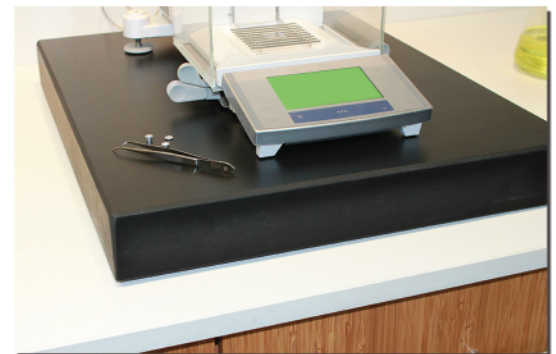
**BALANCE TABLES**

Epoxy resin Balance Tables provide superior stability for highly calibrated equipment. The top and legs are solid 2-1/2" thick molded epoxy resin worksurfaces with a galvanized steel lateral support beam for additional strength and rigidity. Rubberized vibration reduction pads are also included to suppress floor vibrations and increase instrument accuracy. Balance Tables stand 30" tall. Nominal worksurface dimensions are 35" x 24".

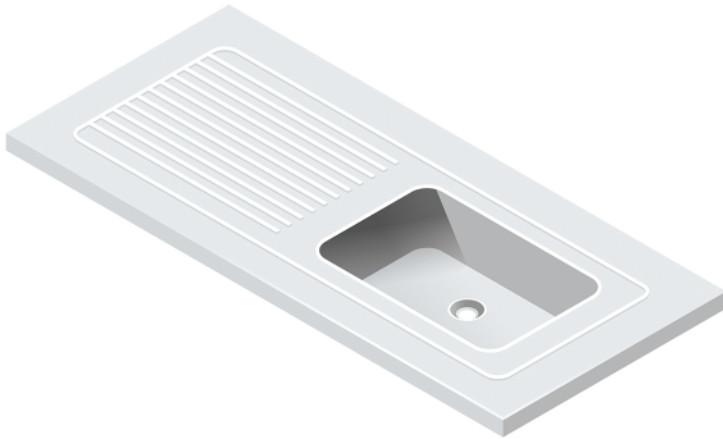
**ISOTOPS & ISOPADS**

IsoTops are 2-1/2" thick countertop sections that provide the stability of a balance table on a benchtop, allowing easy access to adjoining surfaces and utilities. IsoTops are thicker tops that install in-line with other epoxy worksurfaces. Due to the thickness and weight of these tops, special considerations should be taken into account to ensure adequate cabinet support strength.

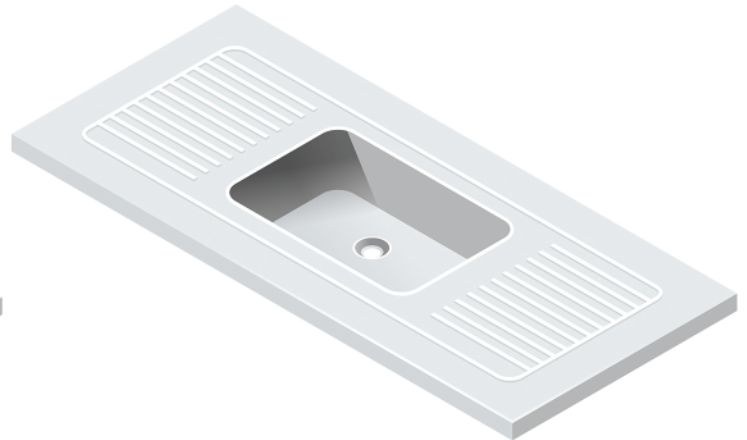
Isopads are mobile 2-1/2" x 18" x 22" epoxy resin pieces that can be placed around the lab to provide vibration damping and stability in any location needed.



DRAINTOP - SINK RIGHT



DRAINTOP - SINK CENTER



**DRAINTOPS**

DrainTop are specially designed worksurfaces that gently slope from the containment rim to the sink area for superior liquid drainage. The molded drain board sections offer curved, raised ribs that facilitate glassware drying and cleanups. The sink cutout can accommodate a Dropln or Double Dropln sink.

Designed for flexibility, DrainTop configurations are available with 3 sink locations, allowing them to be used at the end of an island or peninsula, or in wall runs as 60" sections.

**DRAIN GROOVES**

Drain grooves can be machined on one or both sides of either Dropln or undermount sinks, per specification. These recessed slots decline toward the sink basin, facilitating worksurface drainage while providing a temporary labware drying area.



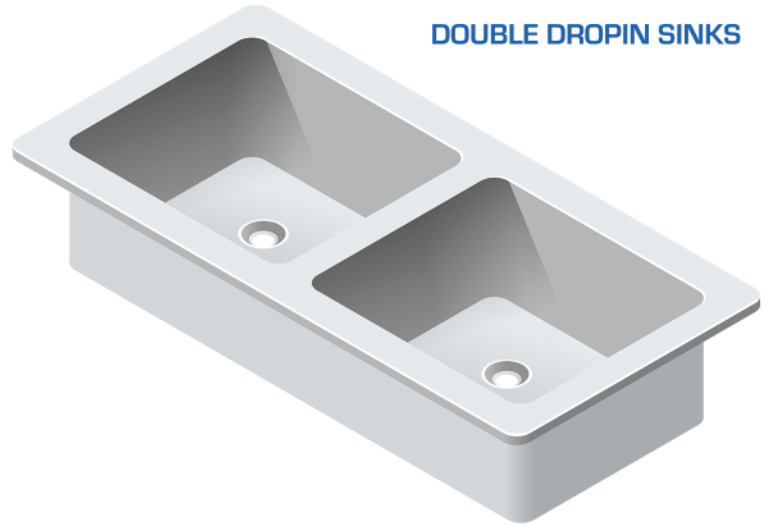
**NOTES**

.....  
.....  
.....  
.....  
.....

## DROPIN SINKS



## DOUBLE DROPIN SINKS

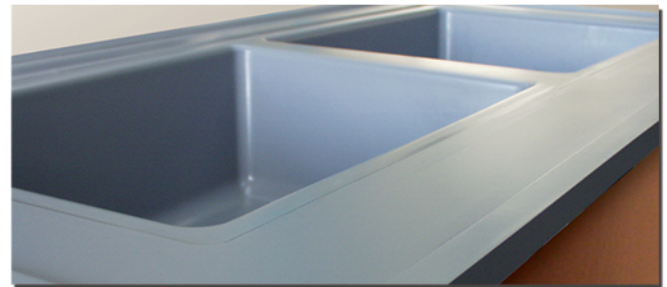


## DROPIN SINKS

Dropln sinks were introduced by Durcon in 1992 and quickly became the industry standard in laboratory sinks due to their ease of installation and the added safety they bring to a lab environment.

Dropln sinks are top mounted into a recessed cutout, eliminating the need for a support system underneath the sink. This simplified method of installation seals the sink cutout and eliminates worksurface overhang above the inner walls of a standard undermount sink basin, which can gather residual chemicals and bacteria. All Dropln sink surfaces are clearly visible and radiused for easy cleaning.

Dropln sinks list and dimensions on Page 10.



## DOUBLE DROPIN SINKS

Molded one-piece Double Dropln sinks are also available. Alternatively, a pair of single Dropln sinks can be installed side-by-side with a 1" worksurface strip between the two installed sinks.

## ADA SINKS

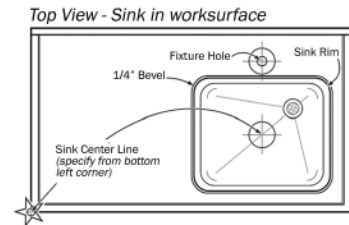
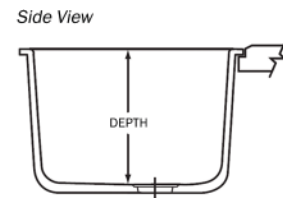
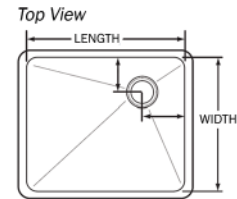
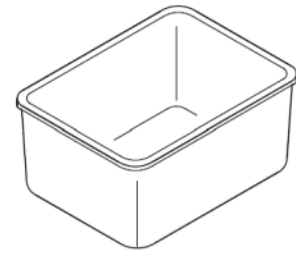
Durcon offers several shallow basin, graduated depth sinks that are ADA compliant. By eliminating the need for support systems under the sink, ADA Dropln sinks accommodate lab users with special needs and help conform to Americans with Disabilities Act guidelines.



ADA SINKS



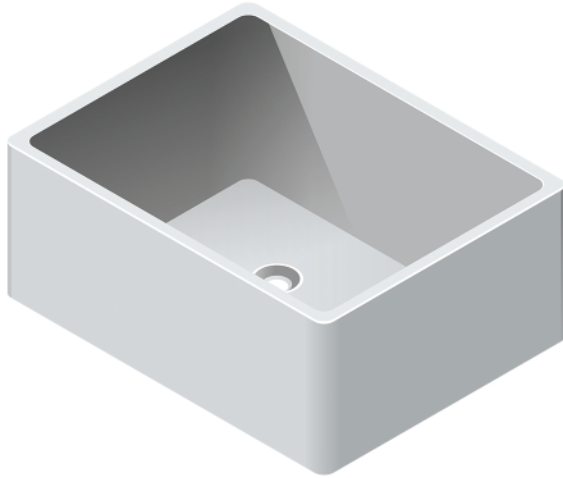
MODEL	LENGTH	WIDTH	HEIGHT	WEIGHT	CU FT	OUTLET	ADA
<a href="#">D01C</a>	9	6	6	8	0.19	Center	
<a href="#">D03C</a>	12	8	6	17	0.33	Center	
<a href="#">A05</a>	14	10	5	20	0.41	Corner	Yes
<a href="#">D05</a>	14	10	6	25	0.49	Corner	
<a href="#">D05C</a>	14	10	6	24	0.49	Center	
<a href="#">D06C</a>	12	12	12	34	1.00	Center	
<a href="#">A07</a>	14	14	5	28	0.57	Corner	Yes
<a href="#">D10C</a>	16	8	7	22	0.52	Center	
<a href="#">D10E</a>	16	8	7	24	0.52	End	
<a href="#">DRS10</a>	11.56	11.56	8.625	16	0.67	Center	
<a href="#">DRS12</a>	13.56	13.56	8.8	18	0.94	Center	
<a href="#">D15</a>	16	12	8	32	0.89	Corner	
<a href="#">D15C</a>	16	12	8	35	0.89	Center	
<a href="#">A18R</a>	18	18	5"/11"	55	2.06	Corner	Yes
<a href="#">D18R</a>	18	18	12.88	75	2.42	Corner	
<a href="#">D19</a>	16	16	9.6	42	1.42	Corner	
<a href="#">D20</a>	16	16	7.5	44	1.11	Corner	
<a href="#">D21</a>	16	16	15	60	2.22	Corner	
<a href="#">D22C</a>	18	6.5	6	20	0.41	Center	
<a href="#">D24C</a>	18	14	10.5	50	1.53	Center	
<a href="#">A25</a>	18	15	5	35	0.78	Corner	Yes
<a href="#">A25M</a>	18	15	2.5	37	0.39	Corner	Yes
<a href="#">D25</a>	18	15	8	45	1.25	Corner	
<a href="#">A26</a>	18	15	5"/11"	40	1.72	Corner	Yes
<a href="#">D30</a>	18	15	11	58	1.72	Corner	
<a href="#">D30C</a>	18	15	11	52	1.72	Center	
<a href="#">D30D</a>	36	15	11	115	3.44	Corner	
<a href="#">D32</a>	18	15	16	51	2.50	Corner	
<a href="#">D33</a>	21	17	9.7	59	2.00	Corner	
<a href="#">D33E</a>	21	17	9.7	58	2.00	End	
<a href="#">DT36</a>	34.5	6.38	3.5	27	0.45	Corner	
<a href="#">D45</a>	21.5	15.5	11	61	2.12	Corner	
<a href="#">DT48</a>	46.5	6.38	3.5	44	0.60	Corner	
<a href="#">D50C</a>	24	16	8	53	1.78	Center	
<a href="#">D51</a>	24	16	9.6	61	2.13	Corner	
<a href="#">D52</a>	24	18	11	70	2.75	Corner	
<a href="#">A55</a>	25	15	5	51	1.09	Corner	Yes
<a href="#">D55</a>	25	15	10	45	2.17	Corner	
<a href="#">A56</a>	25	15	5"/11"	50	2.39	Corner	Yes
<a href="#">D57</a>	25	15	13.6	80	2.95	Corner	
<a href="#">D58</a>	25	15	17.8	79	3.86	Corner	
<a href="#">D59</a>	28	15	11.5	50	2.80	Corner	
<a href="#">D61</a>	30	16	17.8	92	4.94	Corner	
<a href="#">D65C</a>	35.5	19.5	9.8	90	3.93	Center	
<a href="#">D68E</a>	30	16	10	120	2.78	End	
<a href="#">D70C</a>	24	16	15.5	80	3.44	Center	
<a href="#">D78C</a>	36	18	12	94	4.50	Center	
<a href="#">DH20C</a>	27.78	27.78	8	78	3.57	Center	



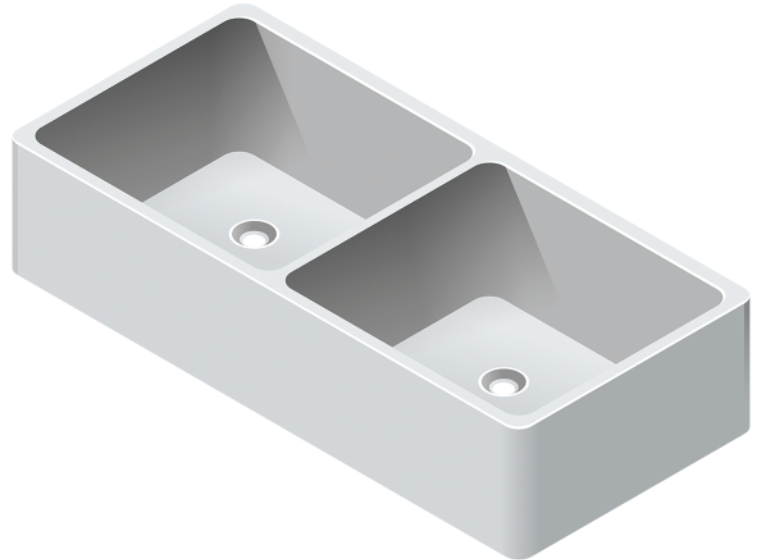
Click the linked Sink model numbers to view individual shop drawing PDFs.

Highlight indicates popular models.

## UNDERMOUNT SINKS



## DOUBLE UNDERMOUNT SINKS



## UNDERMOUNT SINKS

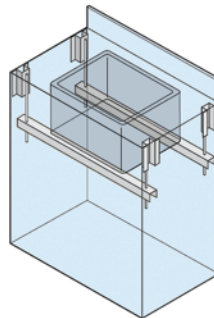
Durcon epoxy Undermount sinks have high chemical resistance, long-term durability and are available in a selection of sizes, making them a popular choice for this style of sink.

Undermount installation requires an under-sink support system (supplied separately). Durcon offers installation tips for these support systems in our *Installation Manual*. Consult your casework manufacturer for suggested installation methods and specific supplies required for a specified cabinet material.

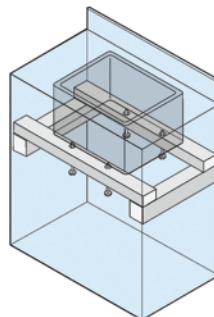
Undermount sinks list and dimensions on Page 12.

## DOUBLE UNDERMOUNT SINKS

Undermount sinks can either be glued together as a pair or installed separately. Several designs are possible by using different sizes of sinks together. Please contact Durcon directly to determine the best approach for this type of configuration.



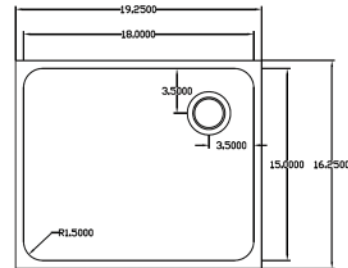
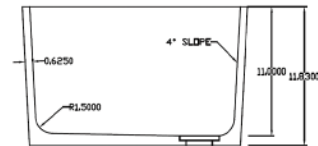
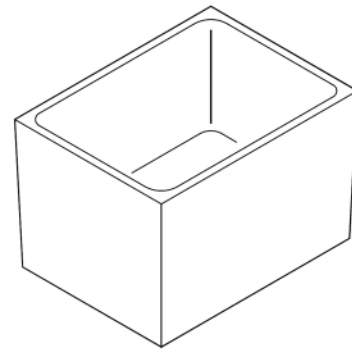
*Hanging Support Installation*



*Frame Support Installation*



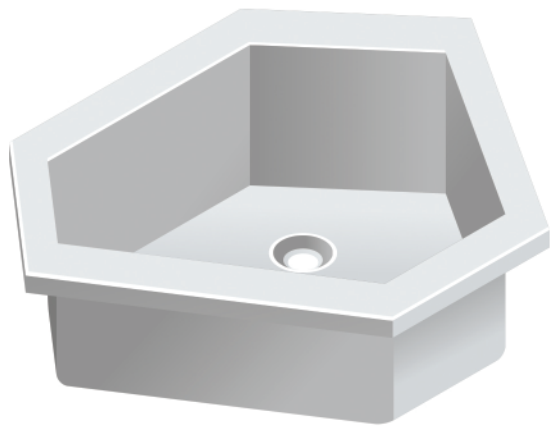
MODEL	LENGTH	WIDTH	HEIGHT	WEIGHT	CU FT	OUTLET
<a href="#">U03C</a>	12	8	6	17	0.33	Center
<a href="#">U05C</a>	14	10	6	22	0.49	Center
<a href="#">U10E</a>	16	8	7	22	0.52	End
<a href="#">U15C</a>	16	12	8	35	0.89	Center
<a href="#">U20</a>	16	16	7.5	28	1.11	Corner
<a href="#">U24C</a>	18	14	10.5	55	1.53	Center
<a href="#">U25</a>	18	15	8	40	1.25	Corner
<a href="#">U30</a>	18	15	11	49	1.72	Corner
<a href="#">U30C</a>	18	15	11	49	1.72	Center
<a href="#">U33C</a>	21	17	10	64	2.07	Center
<a href="#">U33E</a>	21	17	10	67	2.07	End
<a href="#">U45</a>	21.5	15.5	11	52	2.12	Corner
<a href="#">U50C</a>	24	16	8	55	1.78	Center
<a href="#">U50E</a>	24	16	8	60	1.78	End
<a href="#">U51E</a>	24	16	10	60	2.22	End
<a href="#">U52E</a>	23.6	17.6	10.8	74	2.60	End
<a href="#">U53E</a>	24.4	18.4	16.8	123	4.36	End
<a href="#">U54</a>	23	21	19	96	5.31	Corner
<a href="#">U55</a>	25	15	10	66	2.17	Corner
<a href="#">U56C</a>	24	16	12	68	2.67	Center
<a href="#">U59E</a>	28	15	12	85	2.92	End
<a href="#">U60E</a>	28	20	8.8	83	2.85	End
<a href="#">U61C</a>	30	18	18	90	5.63	Center
<a href="#">U63E</a>	31	17	10	84	3.05	End
<a href="#">U64C</a>	31	21	12	95	4.52	Center
<a href="#">U65C</a>	35.5	19.6	10	115	4.03	Center
<a href="#">U67C</a>	36	20	16	195	6.67	Center
<a href="#">U71C</a>	43	15	11	108	4.11	Center
<a href="#">U73</a>	38	21	19.1	155	8.82	Corner
<a href="#">U75C</a>	42	20	10	126	4.86	Center



Click the linked Sink model numbers to view individual shop drawing PDFs.

Highlight indicates popular models.

## TRIFACIA SINKS



## CURVED SINKS

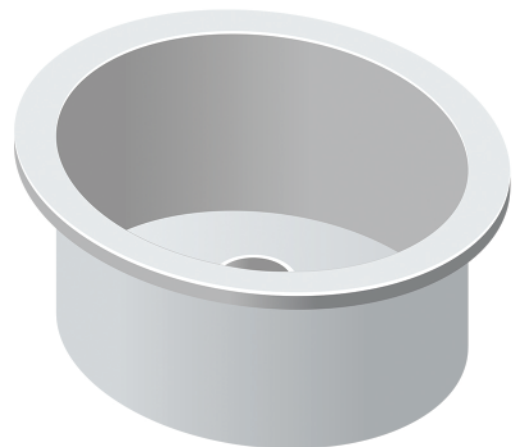


## TRIFACIA DROPLN SINKS

Trifacia Dropln sinks are designed for placement in Durcon Trifacia (hexagonal) workstations.

The large Trifacia Dropln sink basin is ideally suited for student workstations and is molded as one piece with coved interior corners for easy cleaning and maintenance.

## ROUND & ELLIPTICAL SINKS



## ROUND & ELLIPTICAL SINKS

These specialty sinks are functional complementary solutions for circular or octagonal worksurface shapes and add a customized look and feel to a laboratory environment. Round and elliptical sinks are available in both Dropln and undermount styles and are designed for installation at the center of a worksurface, or at the surface edge to fit the contours of a custom shaped top.

## END & WALL MOUNT UTILITY SINKS

End and wall sinks are specially designed epoxy resin basins for placement at the end of wall runs, peninsulas and islands in order to provide a disposal outlet for liquids as well as a cleaning area for larger lab instruments and items.

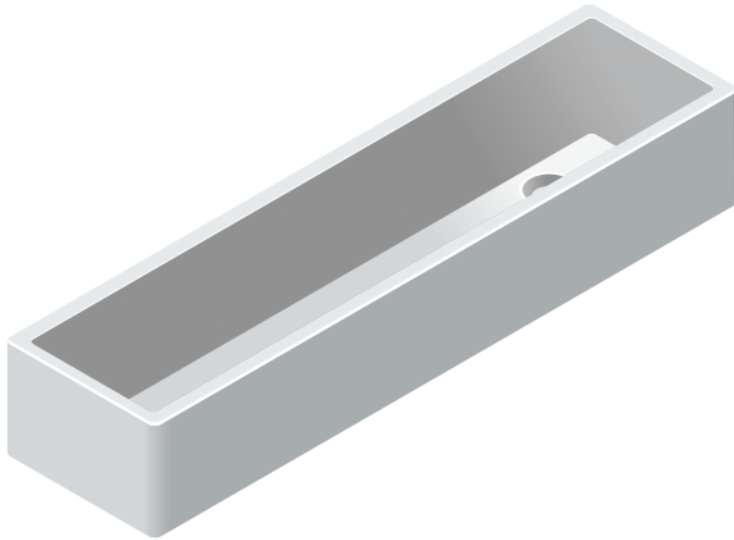
These basins can be fabricated for fixtures or a trough in the integral backsplash. End and wall sinks are commonly mounted on wooden or metal frames in order to bring the basin to the desired height [frames supplied separately].

End and Wall Mount sinks list and dimensions on Page 14.

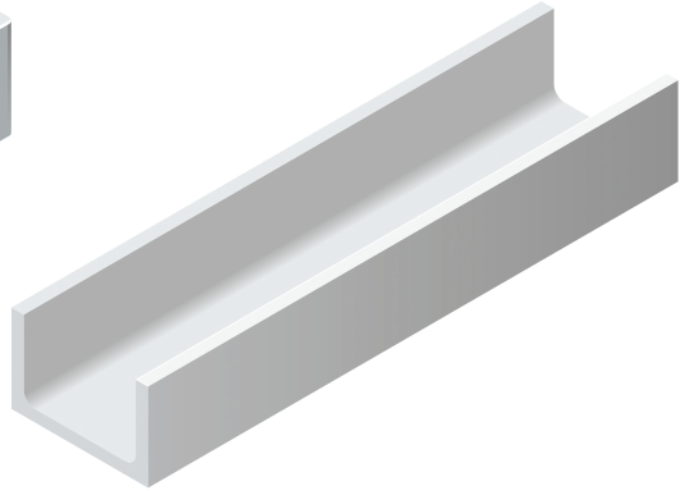
## END & WALL MOUNT SINKS



## UNDERMOUNT TROUGHS



## SECTIONAL UNDERMOUNT TROUGHS



## DROPLIN TROUGHS

Top-mounted Dropln troughs do not require additional supports and feature the same ease of installation as our popular Dropln sinks. Available in two sizes.

Troughs list and dimensions on Page 16.

## ONE PIECE UNDERMOUNT TROUGHS

Closed-end undermount troughs are self-contained units which are installed under the worksurface.

## SECTIONAL UNDERMOUNT TROUGHS

Open-ended sectional undermount troughs are molded in 72" sections, and can be joined together to form longer runs as needed.

Sections are fabricated to meet specifications, and ends are applied by Durcon. The drain hole for a standard outlet is cut in the 6" flat section at the end of the deepest trough section.



### NOTES

.....

.....

.....

.....

.....

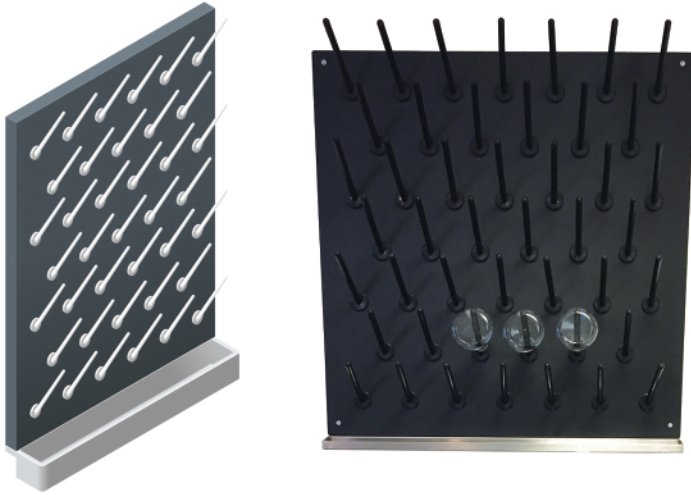
.....

.....

.....

## PEGBOARDS & DRIP TRAYS

Epoxy resin Pegboards are supplied with oval polypropylene pegs set at a 30° horizontal angle for effective support and drainage of lab glassware. As an option, 2" wide stainless steel drip trays are available for most pegboard sizes [PVC tubing included].



## CUPSINKS

Cupsinks are small sink units designed to provide a convenient disposal site for liquid waste while maximizing available working space.



## INSTALLATION KITS

Installation kits consist of our most-requested field items, and are offered as an easy kit to help improve the installation process. Available in 3 sizes.



### SMALL KIT

*For jobs up to 90 linear feet*

- 2 Empty Caulk Tubes
- 1 Non-abrasive Pad
- 25 Beefcloth Rags

### MEDIUM KIT

*For jobs up to 180 linear feet*

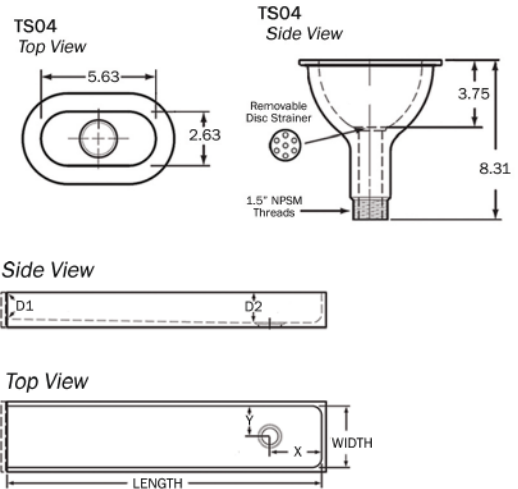
- 4 Empty Caulk Tubes
- 2 Non-abrasive Pads
- 50 Beefcloth Rags

### LARGE KIT

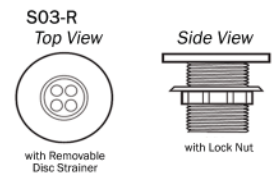
*For jobs up to 360 linear feet*

- 8 Empty Caulk Tubes
- 2 Non-abrasive Pads
- 100 Beefcloth Rags

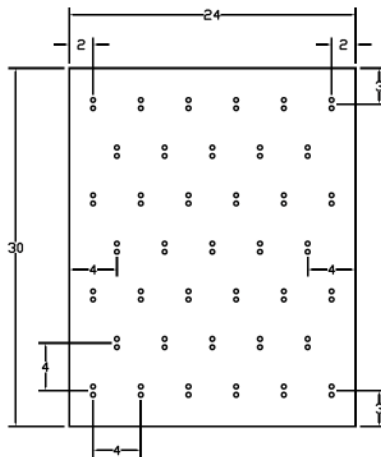
MODEL	LENGTH	WIDTH	HEIGHT	WEIGHT	CU FT	OUTLET
<a href="#">TS04</a>	5.68	2.68	8.3	3	0.07	Oval
<a href="#">TS07</a>	6.3	6.3	11	3	0.25	Round
<a href="#">TS09</a>	8	8	9.5	3.5	0.35	Round
<a href="#">TS12</a>	8.81	2.68	10	4.8	0.14	Oval
<a href="#">TS15</a>	10.81	3	9.62	4	0.18	Oval
<a href="#">TS18</a>	13.56	4.38	9.93	5.2	0.34	Rectangle
<a href="#">E46</a>	23.5	15	17.13	74	3.49	Front
<a href="#">E47</a>	23.5	15	19.13	77	3.90	Front
<a href="#">E48</a>	23.5	15	13.38	75	2.73	Front
<a href="#">T1S1</a>	72.81	7.88	4.54	61	1.51	
<a href="#">T1S2</a>	72	7.88	3.79	53	1.24	
<a href="#">T1S3</a>	72.81	7.88	3.04	45	1.01	
<a href="#">T2S1</a>	72	5.25	4.5	49	0.98	
<a href="#">T2S2</a>	72	5.25	3.75	44	0.82	
<a href="#">T5194</a>	51	4.88	9	34	1.30	



MODEL	MATERIAL	DESCRIPTION	INSIDE	OUTSIDE	LENGTH	COLORS
S03-R	Polypropylene	Sink Outlet	1.4	3.3	3	Black, Gray, White
USS2	Polypropylene	Sink Stopper	-	1.4	-	Black
U-OE	Polypropylene	Open End Overflow	-	1.4	4,6,8,10	Black
O.E.S.	Polypropylene	U-OE Strainer Cap	-	1.4	-	Black
S03	Epoxy Resin	Sink Outlet	1.4	3.3	3	All except Black



MODEL	HEIGHT	WIDTH
<a href="#">PB1824</a>	18	24
<a href="#">PB1830</a>	18	30
<a href="#">PB1836</a>	18	36
<a href="#">PB2030</a>	20	30
<a href="#">PB2036</a>	20	36
<a href="#">PB2424</a>	24	24
<a href="#">PB2430</a>	24	30
<a href="#">PB2436</a>	24	36
<a href="#">PB3024</a>	30	24
<a href="#">PB3030</a>	30	30
<a href="#">PB3036</a>	30	36
<a href="#">PB3224</a>	32	24
<a href="#">PB3230</a>	32	30
<a href="#">PB3624</a>	36	24
<a href="#">PB3630</a>	36	30
<a href="#">PB3636</a>	36	36
<a href="#">PB4230</a>	42	30
<a href="#">PB4830</a>	48	30
<a href="#">PB4836</a>	48	36
<a href="#">PB4848</a>	48	48



Pegboards available in Epoxy and SPC-CR material.

PEG	DETAILS
Length	5.0", 8.0"
Diameter	0.5"
Material	Polypropylene
Colors	White



Click the linked Sink model numbers to view individual shop drawing PDFs.

Highlight indicates popular models.

## DURCON COLOR MATCHED CAULK

Durcon Color Matched Caulk is a 100% siliconized acrylic that is formulated to color match Durcon Epoxy, SPC and Solicor worksurfaces & sinks.

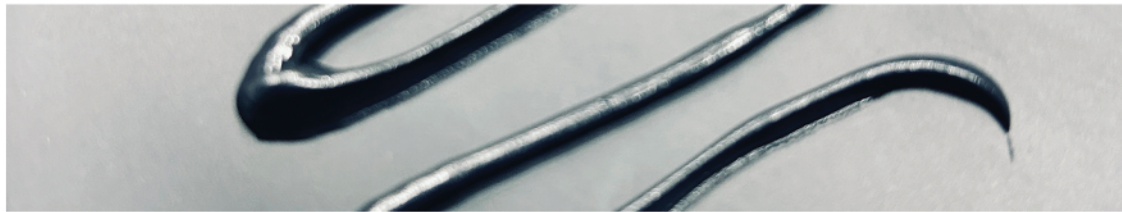
- Stain, mold & mildew resistant
- Stays flexible
- Easy water clean-up
- Water-resistant
- Consumer or professional use
- Does NOT contain Etylene Glycol

## STORAGE & SHELF LIFE

- Do not allow product to freeze
- Close container tightly when not in use & store off the floor in a well ventilated area
- Rotate stock, shelf life expires 18 months from manufacture date

## AVAILABLE COLORS

The colors listed are available in 5.5 oz squeeze tubes [enough for 25 linear feet] & 10.5 oz cartridges [45 linear feet].



## PREP & DIRECTIONS

After installation process is completed, including the application of epoxy adhesive, the worksurface must be clean, dry and free from dirt, dust, grease, oil, mildew, wax, loose paint and old caulk. Apply only when caulk, air and substrate temperatures are above 50°F. Thoroughly rinse surface and allow to dry completely.

1. Clip off tip of spout at a 45° angle
2. Apply caulk using steady, even pressure to completely bridge joints
3. Smooth caulk using wet finger for a neat appearance
4. Wipe away excess with a damp cloth before it dries
5. Protect from water until cured for 72 hours, larger beads and cool, humid conditions may take longer

Clean skin and equipment with warm water and a mild soap immediately after use.



SKU Number	PRODUCT Name	PRODUCT Description
SPLY-INSTALLKIT-SMALL	Installation Kit - Small	Empty Tubes (2), Pad (1), Beefcloths (25)
SPLY-INSTALLKIT-MEDIUM	Installation Kit - Medium	Empty Tubes (4), Pads (2), Beefcloths (50)
SPLY-INSTALLKIT-LARGE	Installation Kit - Large	Empty Tubes (8), Pads (2), Beefcloths (100)
CALK-055-101	Color Matched Caulk, 5.5 oz	Black Onyx worksurface matching caulk
CALK-105-101	Color Matched Caulk, 10.5 oz	Black Onyx worksurface matching caulk
CALK-055-111	Color Matched Caulk, 5.5 oz	Graphite worksurface matching caulk
CALK-105-111	Color Matched Caulk, 10.5 oz	Graphite worksurface matching caulk
CALK-055-109	Color Matched Caulk, 5.5 oz	Gray worksurface matching caulk
CALK-105-109	Color Matched Caulk, 10.5 oz	Gray worksurface matching caulk
CALK-055-121	Color Matched Caulk, 5.5 oz	Lunar White worksurface matching caulk
CALK-105-121	Color Matched Caulk, 10.5 oz	Lunar White worksurface matching caulk
CALK-055-112	Color Matched Caulk, 5.5 oz	Tan worksurface matching caulk
CALK-105-112	Color Matched Caulk, 10.5 oz	Tan worksurface matching caulk
CALK-055-118	Color Matched Caulk, 5.5 oz	Dark Khaki worksurface matching caulk
CALK-105-118	Color Matched Caulk, 10.5 oz	Dark Khaki worksurface matching caulk
CALK-055-103	Color Matched Caulk, 5.5 oz	Pearl worksurface matching caulk
CALK-105-103	Color Matched Caulk, 10.5 oz	Pearl worksurface matching caulk

\*Custom colors available upon request

## SEFA RECOMMENDED CHEMICAL & STAIN RESISTANCE TESTING

CHEMICAL Tested	TEST method	RATING
Amyl Acetate	A	1
Ethyl Acetate	A	1
Acetic Acid, 98%	B	0
Acetone	A	1
Acid Dichromate, 5%	B	0
Butyl Alcohol	A	1
Ethyl Alcohol	A	1
Methyl Alcohol	A	0
Ammonium Hydroxide, 28%	B	1
Benzene	A	1
Carbon Tetrachloride	A	1
Chloroform	A	1
Chromic Acid, 60%	B	3
Cresol	A	1
Dichloroacetic Acid	A	1
Dimethyl formamide	A	1
Dioxane	A	1
Ethyl Ether	A	0
Formaldehyde, 37%	A	0
Formic Acid, 90%	B	1
Furfural	A	1
Gasoline	A	0
Hydrochloric Acid, 37%	B	1
Hydrofluoric Acid, 48%	B	2
Hydrogen Peroxide, 30%	B	0
Tincture of Iodine	B	0
Methyl Ethyl Ketone	A	0
Methylene Chloride	A	1
Monochlorobenzene	A	1
Naphthalene	A	0
Nitric Acid, 20%	B	0
Nitric Acid, 30%	B	1
Nitric Acid, 70%	B	1
Phenol, 90%	A	1
Phosphoric Acid, 85%	B	0
Silver Nitrate, Saturated	B	1
Sodium Hydroxide, 10%	B	1
Sodium Hydroxide, 20%	B	1
Sodium Hydroxide, 40%	B	1
Sodium Hydroxide, Flake	B	0
Sodium Sulfide, Saturated	B	1
Sulfuric Acid, 33%	B	0
Sulfuric Acid, 77%	B	1
Sulfuric Acid, 96%	B	3
Sulfuric Acid, 77% & Nitric Acid 70%, Equal Parts	B	1
Toluene	A	1
Trichloroethylene	A	1
Xylene	A	1
Zinc Chloride, Saturated	B	0

### TEST METHOD A

For volatile chemicals. A cotton ball is saturated with the test chemical and placed in a one ounce container (10mm x 75mm test tube or similar container). The container is inverted on the test material surface for a period of 24 hours. Temperature of test: 73° +/-4 °F. This method is used for the organic solvents.

### TEST METHOD B

For non-volatile chemicals. Five drops (1/4 cc) of the test chemical are placed on the test material surface. The chemical is covered with a watch glass (25mm) for a period of 24 hours. Temperature of test: 73° +/-4 °F. This method is used for all chemicals listed other than solvents.

### RATING

After 24-hours of exposure, areas are washed with water, then a detergent solution, and finally with isopropyl alcohol. Materials are then rinsed with distilled water and dried with a cloth. Samples are numerically rated as:

**0 = No effect, 1 = Excellent, 2 = Good, 3 = Fair**

## PHYSICAL & FIRE TESTING

TEST Identification	TEST Description	RESULTS [imperial]	RESULTS [metric]
ASTM D785	Rockwell Hardness	109 [M Scale]	109 [M Scale]
ASTM D696	Linear Thermal Expansion	1.2 x 10 <sup>-5</sup> in/in°F	2.15 x 10 <sup>-5</sup> mm/mm°C
ASTM D570	Water Absorption	0.03% [24 hours]	0.03% [24 hours]
ASTM D790	Flexural Strength	12.6 kpsi	87 MPa
ASTM D790	Flexural Modulus	3240 kpsi	22.4 GPa
ASTM D792	Density	133.6 lb/ft <sup>3</sup>	2.14 g/cm <sup>3</sup>
ASTM D695	Compressive Strength	32.7 kpsi	226 MPa
ASTM D635	Fire Resistance	Self-extinguishing	Self-extinguishing
ASTM D3801	Burning Characteristics [Sample as Received]	30 seconds max burn time	30 seconds max burn time
ASTM D648	Heat Distortion Temperature	380°F	193°C
ASTM E84	Flame Spread Index	0 [Class A]	0 [Class A]
ASTM E84	Smoke Developed Index	300 [Class A]	300 [Class A]
ASTM E84	Time to Ignition	5 min 02 sec	5 min 02 sec
ASTM E84	Max Flamespread Distance	0.1 ft	3 cm
ASTM E84	Time to Maximum Spread	7 min 33 sec	7 min 33 sec

## SUSTAINABILITY

Durcon is a member of the United States Green Building Council (USGBC) and our Epoxy Greenstone worksurfaces meet various Leadership in Energy and Environmental Design (LEED) standards, which may contribute toward LEED Certification. Durcon products can contribute to the following LEED credits:



- Credit MR 3.1 & 3.2 Material Reuse
- Credit MR 4.1 & 4.2 Recycled Content (Greenstone)
- Credit MR 5.1 & 5.2 Point of Manufacture / Point of Extraction
- Credit EQ 4.1 VOC Content (Health Care & School Buildings)

## ADVANTAGES, CERTIFICATIONS & MEMBERSHIPS



### CHEMICAL RESISTANCE

Durcon Epoxy's monolithic, non-porous composition does not allow corrosive chemicals to seep in & cause delamination or swelling.



### DURABILITY

Durcon is virtually synonymous with durability. The dense, heavy weight of our worksurfaces speaks to the product quality & longevity.



### HEAT & FLAME RESISTANCE

Our epoxy is specifically conditioned for resistance to heat & flame, rating the highest-possible Class A on ASTM E84 testing.



### LIGHT REFLECTANCE VALUE [LRV]

When illuminated, different colors & materials reflect or absorb unique quantities of light, with Durcon Epoxy competitively low & advantageous.



### COMPANY HISTORY & EXPERIENCE

Since the 1960s, the Durcon company has used our knowledge of epoxy resin to create the best possible product solutions for laboratories.



### MADE IN THE USA

Our products are 100% made in the USA, helping support American workers & reducing the risk of shipping delays and complications to your project.



### ENVIRONMENT CONSCIOUS

Durcon Greenstone Epoxy is our sustainable option for lab-grade worksurfaces that does not compromise in performance or appearance.



### APPEARANCE

With a smooth, low glare surface & monolithic, color-through composition, the appearance of Durcon Epoxy is essential to a high caliber, timeless lab design.



### SAFE & CLEAN

Durcon Epoxy products contain no asbestos, will not ignite, are non-conductive and excellent for ease of decontamination for use in radioactive areas.



### SEFA MEMBER

Durcon is proud to be a founding member of the *Scientific Equipment and Furniture Association (SEFA)* since 1988.



### AIA MEMBER

Durcon is an *American Institute of Architects* member & Continuing Education provider offering learning course credits.



### ISO 9001:2015 CERTIFIED

Durcon has demonstrated its ability to consistently provide products that meet regulatory requirements per ISO 9001:2015.



### INDOOR AIR QUALITY

Greenguard Gold by UL Solutions requires lower total VOC (Volatile Organic Compounds) emissions levels to ensure products are acceptable for use in settings such as schools & healthcare facilities.



### FOOD SAFETY

Formulary reviewed & certified NSF/ANSI 51, epoxy is safe to use in the construction of commercial food equipment based on U.S. FDA regulations.



### I2SL MEMBER

Durcon is a founding member of the International Institute for Sustainable Laboratories (I2SL), fostering energy efficiency & sustainable practices in labs.



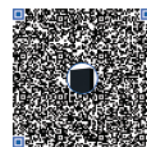
### SCS CERTIFIED RECYCLED CONTENT

Greenstone is certified as conforming to the SCS Recycled Content Standard V7-0 for containing a minimum 10% post-consumer recycled content.



### LEED ACCREDITATION

Durcon epoxy meets the Leadership in Energy and Environmental Design (LEED) standards that can contribute toward accreditation.



### PRODUCT SAMPLES

Request product samples in 2x2, 4x4 and 12x12 sizes at 1.0" thickness by scanning the QR code or emailing [samples@durcon.com](mailto:samples@durcon.com)



**W**

**D**

**A**

**B**

**DURCON A WILSONART COMPANY  
206 ALLISON DRIVE  
TAYLOR, TEXAS 76574  
WWW.DURCON.COM**

**512-595-8000  
SALES@DURCON.COM**