



A WILSONART COMPANY

## Why Solid Surface

# Solid Surface – Performance Attributes



Seamless appearance



Thermo-formable



Repairable & Renewable



Non-porous



Endless design possibilities

# Solid Surface – Segments

Retail



Healthcare



Convenience



Hospitality



Food Service



Education



# Solid Surface – Horizontal Applications

K&B Countertop



Workstations



Food Preparation Areas



Window Sills



Table & Desktops



Laboratory Tops



Reception Desk



Bar Tops



# Solid Surface – Vertical Applications

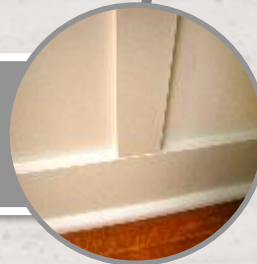
Shower Walls



Partitions



Wainscoting



Exterior Building Cladding



Wall Cladding



Signs





# Durcon Fab – Testimonial

- Fabrication of Solid Surface worksurfaces
- Beautiful Black Onyx Mirage speckled color selection
- Sink cutouts, seamless corners
- “Lighthouse” project – Auburn Alabama



# Solid Surface – Product Offering

## Solid Surface Sheets

- 74 Designs
  - Translucent
  - S/L Particulate
  - Solid
  - Veining
- 2 Dimensions
  - ½" x 30" x 144"
  - ¼" x 30" x 120"

## Solid Surface Seam Kits

- 32 Seam Kits
  - Matches for all Wilsonart Solid Surface standard designs

## Solid Surface Sinks

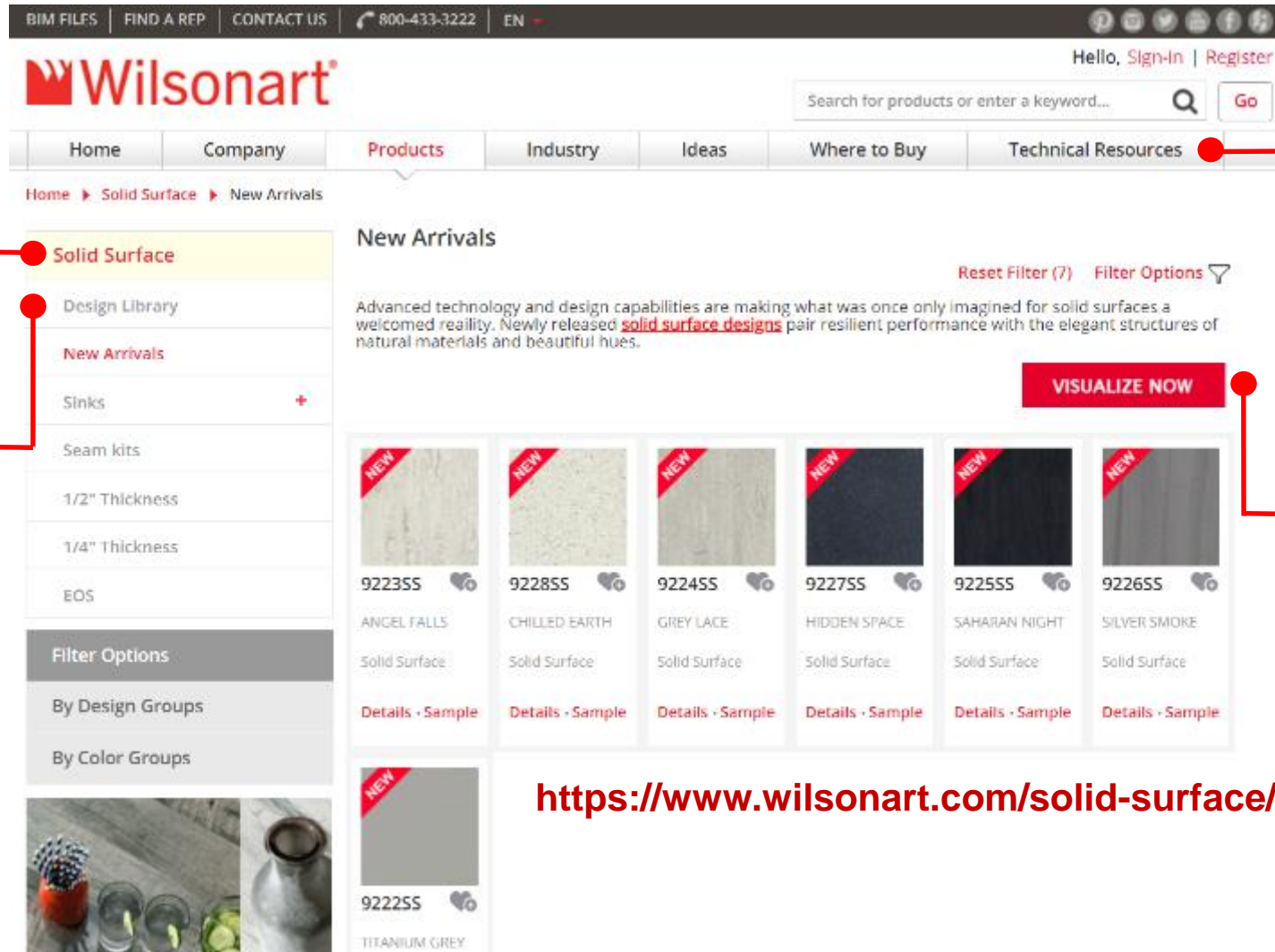
- 18 Models
  - Double Bowls (4)
  - Single Bowls (4)
  - Vanity Bowls (9)
  - Specialty Bowl (1)
- 3 Colors
  - Bright White
  - Linen White
  - Cream



# Solid Surface – Wilsonart Resources

Product  
Overview

Design  
Portfolio



Fabrication Manual  
Technical Spec  
Certifications  
BIM Objects  
Master Spec

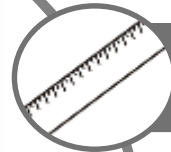
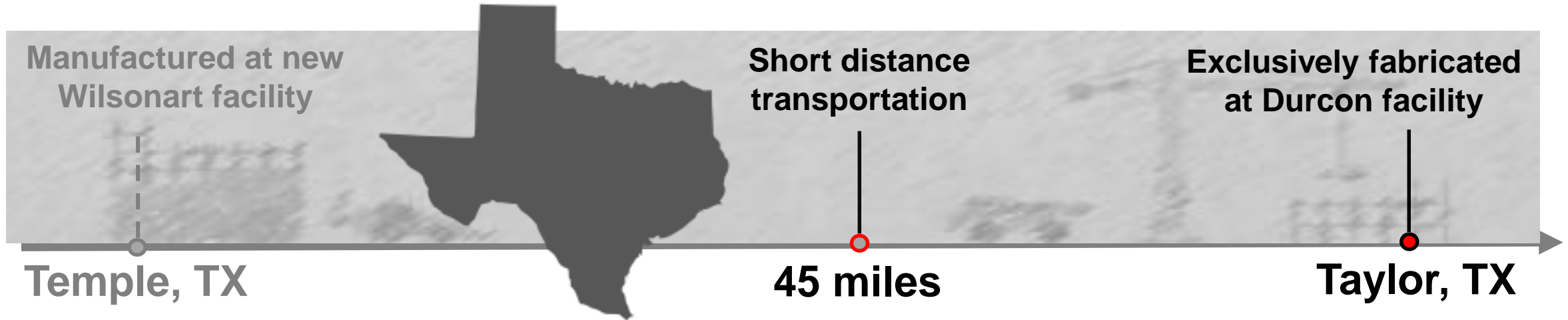
Visualizer

<https://www.wilsonart.com/solid-surface/design-library>





# Solid Surface – Fabrication Process



Wide sheet / Custom Dimensions



New Design Development



Compliance [EPD/SCS]



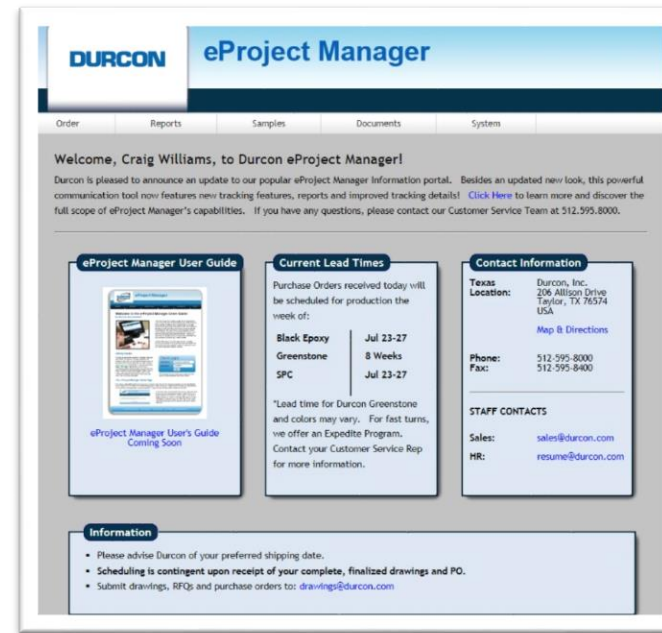
## Durcon Facility – Fast Facts

- Expanded facility opened - 1985
- Manufacturing space - 130,000+ sq ft
- Largest custom fabricator of epoxy resin worksurfaces in USA
- Fabricated pieces - 7,000+ per week
- Epoxy slabs produced - 7M+ sq ft per year
- Manufacturing locations - 3
- Employees - 425
- Countries - 50
- Global sales offices - 6



# Durcon Customer Support Advantages

- eProject Manager
  - [Click here to login](#)
- Intuitive Dashboard & Navigation
  - Upload files
  - [Order samples](#)
  - Check order status, shipping & more
- [Resource document library](#)
  - i.e. spec sheets, manuals & guides
- Responsive & friendly Customer Service team



*Easy to use dashboard*



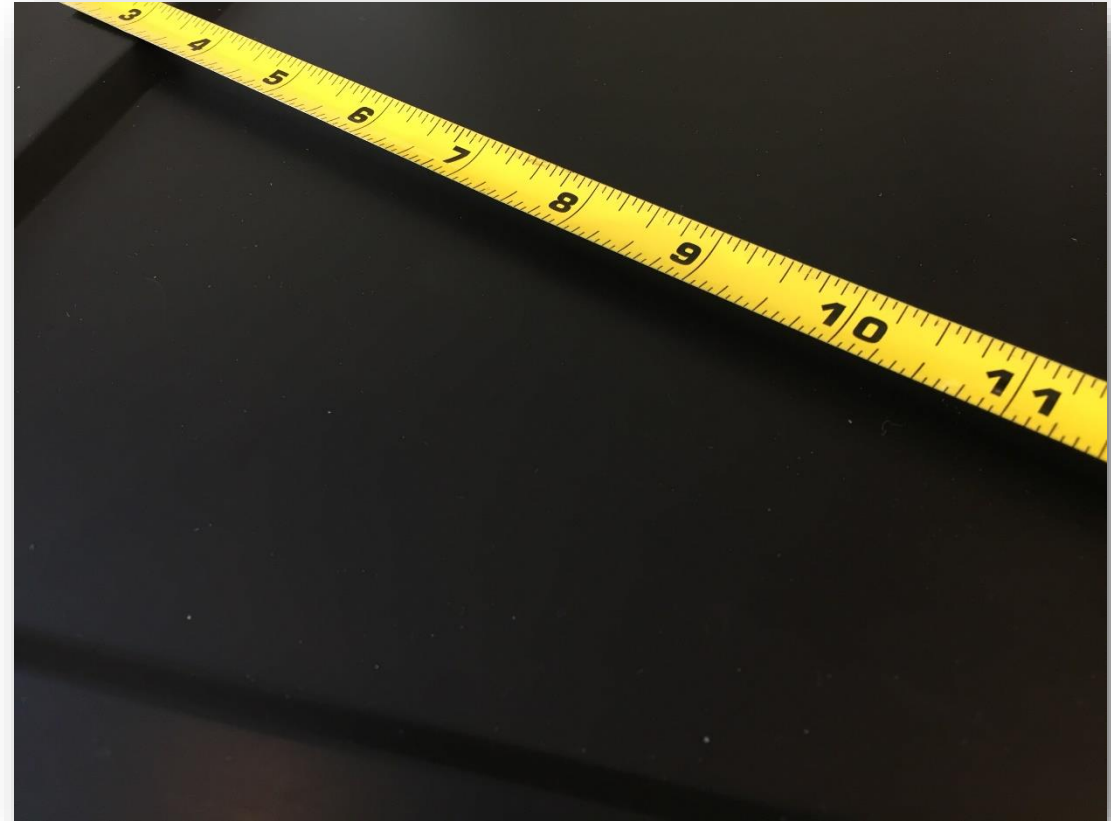
*Search by job phase*



*Search by job type*

# Durcon Quality Assurance

- Quality Checkpoints
  - 3x dimensional
  - 4x visual
  - Fabrication database
- Continuous Improvements
  - Best Practice training
  - Monthly Operational Excellence Review
  - Daily customer feedback communication
- ISO 9001:2015 Certified





# Certifications & Memberships



**ISFA Member** – International Surface Fabricators Association

**ISO 9001:2015** – International Organization for Standardization certified

**Greenguard Gold** – Low chemical emissions

**SCS Certified** – Minimum 10% post-consumer recycled glass content

**NSF International** – Tops safe to use in food prep areas certification

**SEFA Member** – Scientific Equipment & Furniture Association, Executive Member

**USGBC Member** – U.S. Green Building Council

**AIA Member** – American Institute of Architects

Durcon products are proudly **manufactured & fabricated in the USA**



**THANK YOU**